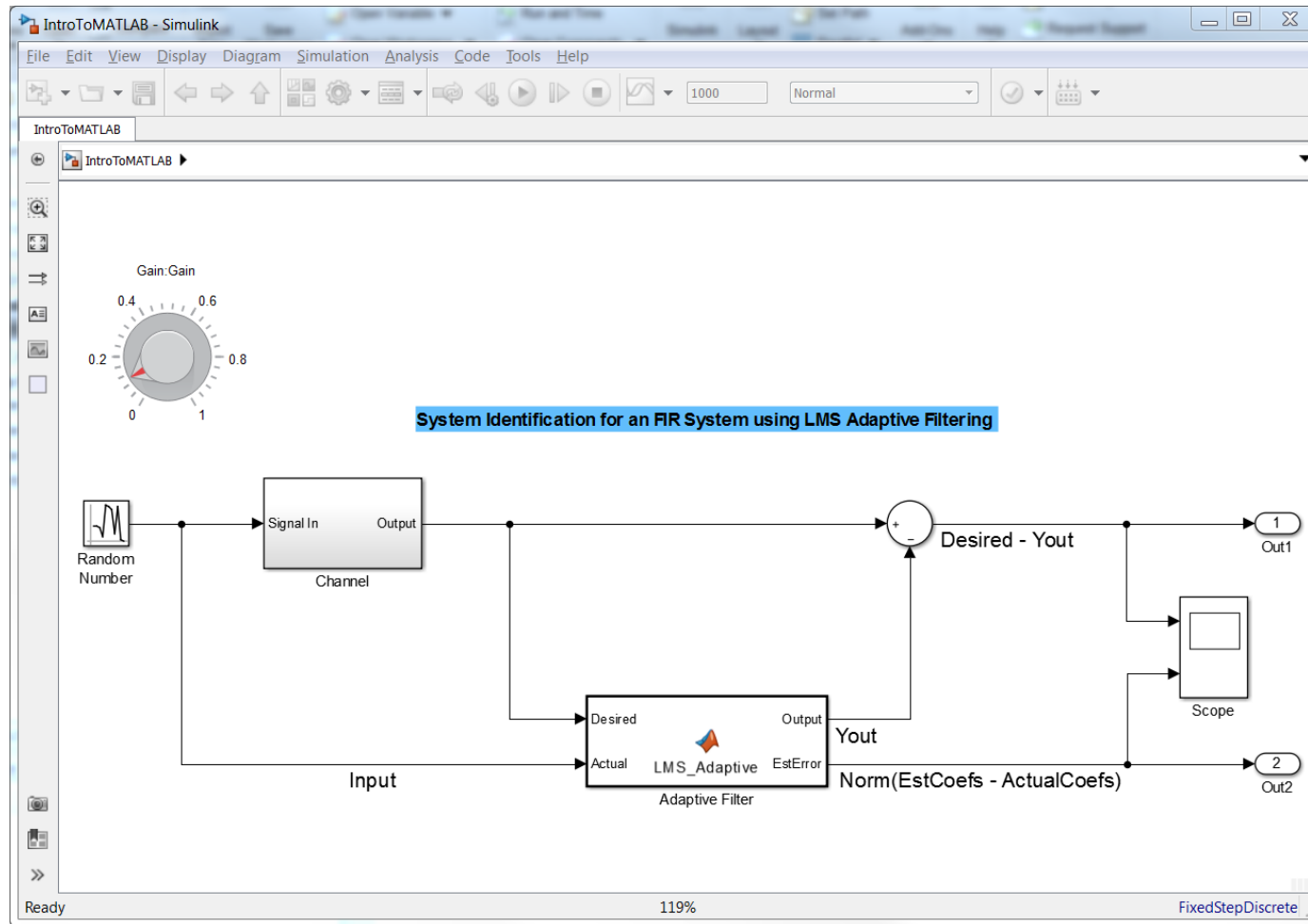


# Introduction to Simulink for MATLAB Users

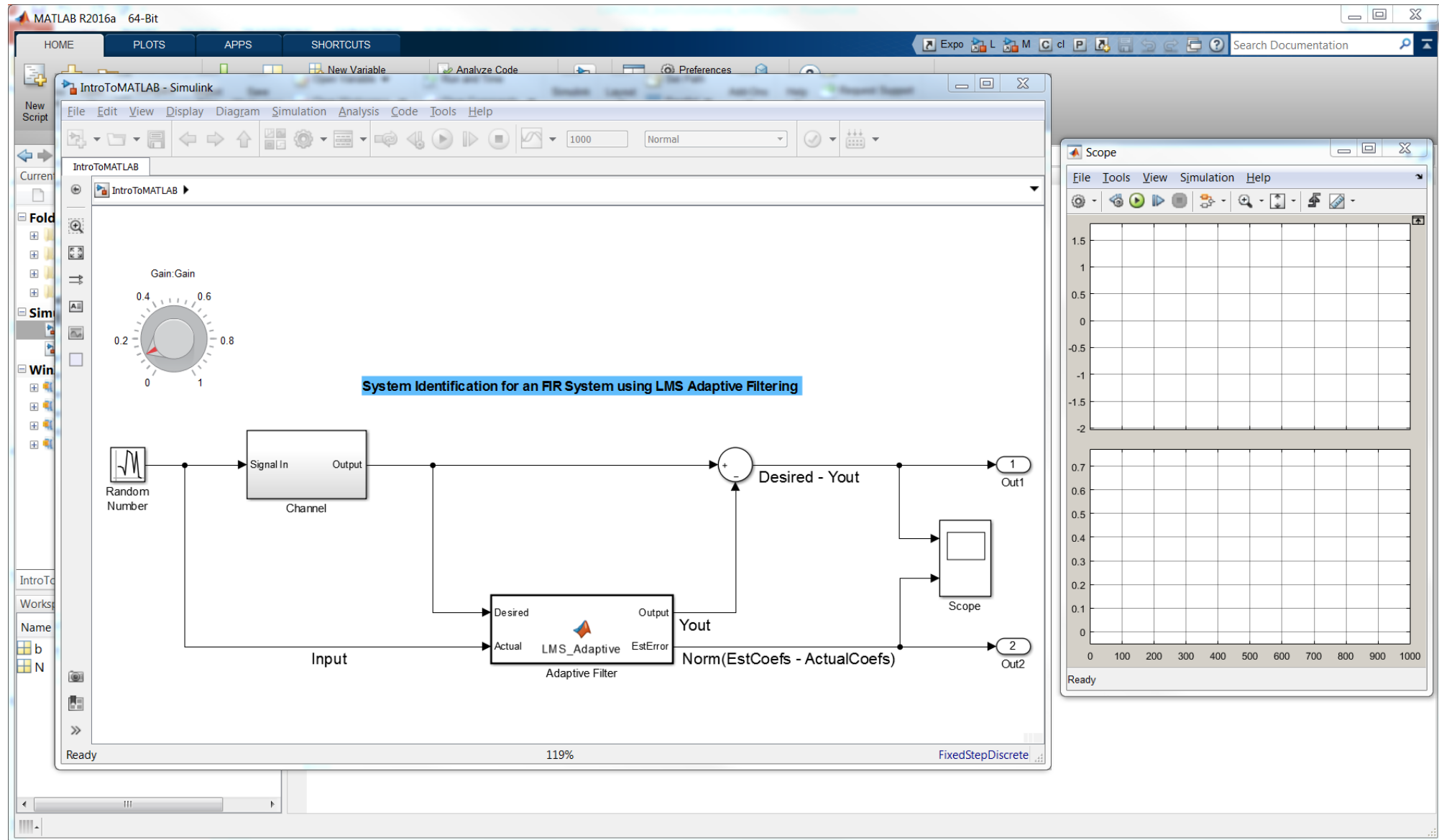
**Magnus Jung**  
Application Engineer

# What is Simulink?

# Simulink is:



# Simulink is:



# Why use Simulink?

# Why use Simulink?

**System Simulation**

# Why use Simulink?

**Solver**

**System Simulation**

# Why use Simulink?

**Solver**

**System Simulation**

**Interactive testing  
and visualization**



HOME PLOTS APPS SHORTCUTS

Expo L M C cl P Search Documentation

New Script New Open Compare Import Data Save Workspace New Variable Open Variable Clear Workspace Analyze Code Run and Time Clear Commands Simulink Layout Preferences Set Path Parallel Add-Ons Help Community Request Support

FILE VARIABLE CODE SIMULINK ENVIRONMENT RESOURCES

C:\Projects\Internal\EXPO2016\IntroToSLForMLUsers\MATLAB

Current Folder

Name ^

- Folder
  - drafts
  - present
  - slprj
- Simulink Model
  - IntroToMATLAB.slx
  - sf\_car\_expo.slx**
- WinZip File
  - DemoModels\_20160418.zip
  - DemoModels\_20160418\_2.zip
  - DemoModels\_20160418\_3.zip
  - IntroToMATLAB\_20160414.zip

sf\_car\_expo.slx (Simulink Model)

Workspace

| Name ^ | Value |
|--------|-------|
|--------|-------|

Command Window

```
fx >> |
```

# Use Simulink for:

**Solver**

**System Simulation**

**Interactive testing  
and visualization**

# Learn more!

# Questions?

# Thanks!